



Multivo™ Max

Wire metal pusher tray

Technical sheet

The low maintenance pusher system when extra strength is needed

Multivo™ Max simplifies daily shelf maintenance



Flexible merchandising to increase operational efficiency

Multivo™ Max ensures well-merchandised shelves and efficient space usage while saving time on daily shelf maintenance.

Multivo™ Max is a wire metal pusher tray for customers who want to keep their shelves stocked and achieve perfect front-facing, high flexibility and efficient space usage. The system allows to keep shelves perfectly merchandised and provides operational benefits as less time is needed to keep the shelf neatly organised.

Why choose Multivo™ Max

Multivo™ Max is a wire metal pusher simplifying daily shelf maintenance thanks to features such as

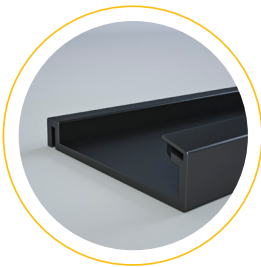
- Adjustable width
- Different lengths and pusher strengths
- Alternative front faces
- Divider options



Use on-shelf pusher trays when extra strength is needed

Flexible and easily installed

The tray is compatible with Multivo™ rail which is easily installed on shelf. The rail is mounted in the front or the back of the shelf and planogram changes can be easily done. Dividers can be adjusted which makes Multivo™ Max easily adaptable to different packaging types and sizes.



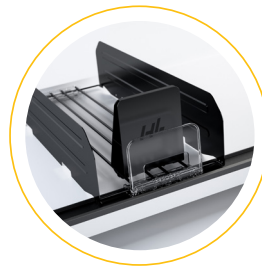
On-shelf rail attachment

Super easy installation



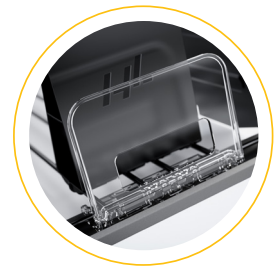
Adjust wire metal pusher tray

Automatic feeding



Dividers

Guide and maintain products in lane



Front faces

The goods from falling out of the tray



Key benefits

- Automated front-facing at all times
- Adjustable dividers to fit different pack types
- Easy to install and maintain – requires less time for merchandising

Recommended categories

- Ready meals
- Cold cuts (ham, bacon, etc)
- Pre-packaged deli and meat
- Bagged salad
- Dairy (sliced cheese)
- Frozen Ready Meals
- Frozen pizza
- Block of chocolate

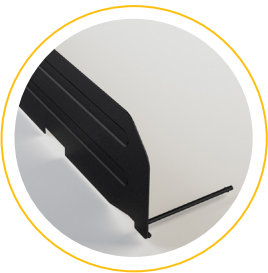
Product overview

Choose the configuration that best suits the category

- Metal or wire dividers, one or two
- Two sizes of pusher
- Different width spans
- Several tray depths
- Different front faces
- Straight or angled pusher
- Various spring strengths

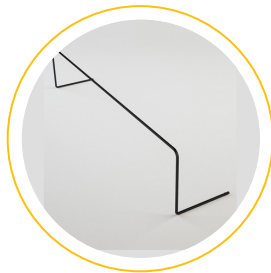


Dividers



METAL

50 mm high (P50)
110 mm high (P100)

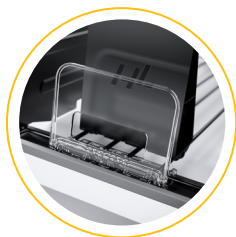


WIRE

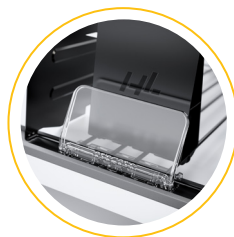
70 mm high (P50)
70 mm high (P100)

- Guide and maintain products in lane
- Use one or two
- Metal or wire dividers

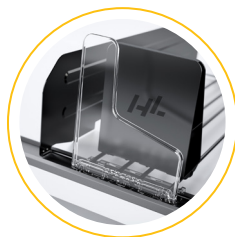
Fronts



1 S8



2 A6



3 F14




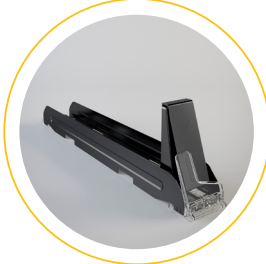

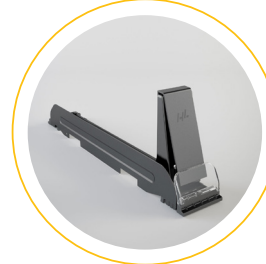


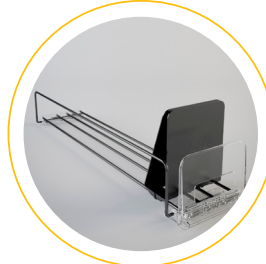

4 A4



5 F7

	Front description	Measures	Usages
1. S8	Straight	110 x 70mm	Boxes, bagged products and soft packs
2. A6	Angled	110 x 55 mm	Boxes, vacuum packs and soft packs
3. F14	Finger	110 x 140 mm	Tall products (E.g. vacuum pack with cheese or ham)
4. A4	Angled	65 x 40 mm	Chocolate bars, smaller vacuum packs with cheese or ham
5. F7	Finger	65 x 70 mm	Tall products (E.g. Chocolate bars)

Trays and L-dividers

	Tray		L-divider	
	WIRE	METAL	WIRE	METAL
PUSHER P50 50 MM WIDE				
	MU-MAX2-2W-P50, Divider height 50 mm	MU-MAX2-2M-P50, Divider height 70 mm	MU-MAX2-1W-P50, Divider height 50 mm	MU-MAX2-1M-P50, Divider height 70 mm
PUSHER P100 100 MM WIDE				
	MU-MAX2-2W-P100, Divider height 70 mm	MU-MAX2-2M-P100, Divider height 110 mm	MU-MAX2-1W-P100, Divider height 70 mm	MU-MAX2-1M-P100, Divider height 110 mm

Item configuration guide

MU-MAX2 - 2M - P100 - 110/250 - le495 - S8 - PS - 2X16N

① ② ③ ④ ⑤ ⑥ ⑦ ⑧

1. Multivo™ Max pusher tray or L-divider
2. Type and amount of dividers (1 or 2 x M: metal / W: wire)
3. Type of pusher (P50: 50mm wide pusher / P100: 100mm wide pusher)
4. Adjustable widths (65-120mm, 110-250mm, 210-355mm)
5. Length (295mm, 395mm, 440mm, 465mm, 495mm, 565mm, 595mm)
6. Type of front (S8: Straight / A6: Angled / F14 or F7:Finger)
7. Front facing of pusher (PS: Straight / PA: Angled)
8. Type and amount of springs (1 or 2 x 8/12/16/20)

Recommendations

Package	Category examples	Front	Divider	Pusher	Width (mm)	Length (mm)	Spring
Vacuum packs	Cheese / ham	Angled	Metal	P100 Angled	110 - 250		
Plastic pouch/bag	Fresh pasta	Straight	Metal	P100 Straight	110 - 250		
Bagged	Bagged salad Coffe beans Bagged vegetables	Straight	Metal	P100 Straight	110 - 250		
Boxes	Ready meal Frozen fruit	Straight	Metal or Wire	P100 Straight	110 - 250		
Skin packs	Fresh meat	Angled	Metal	P100 Angled	110 - 250		
Large boxes	Pizza box	Straight	Wire	P100 Straight	210 - 355		
Chocolate	Chocolate 100g Chocolate 300g	Finger	Wire	P50	65 - 120		

Pack sizes, shapes and weight may vary depending on market. Please trial spring strength for each new category.

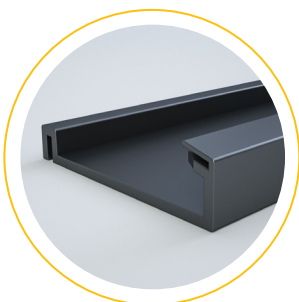
On-shelf attachments

Non-wire shelves

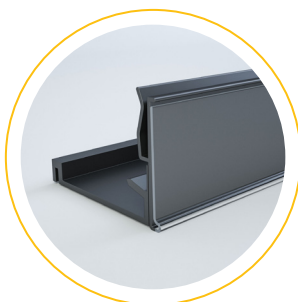
Universal rail attached with tape or magnet onto non-wire shelves.

No	Rail	Color
1.	MU-RAIL	White, Black, Grey S24
2.	MU-FRAIL	Black

1 MU-RAIL



2 MU-FRAIL



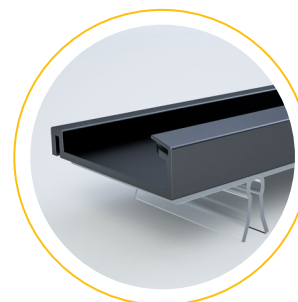
Wire shelves

Universal rail attached with tape onto MU-CLIP which clicks on wire (3 mm). Or click tray directly on shelves by using MU-MAX CLIP (3 mm).

No	Rail/accessorie	Attach using	Color
3.	MU-RAILW *	Clip and tape	White, Black, Grey S24
4.	MU-MAX Clip	Clip	Transparent

* MU-RAIL + MU-CLIP

3 MU-RAILW
M MM WIRE



4 MU-MAX CLIP
3 MM WIRE



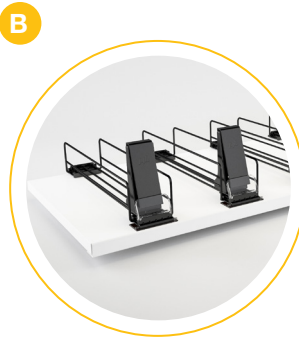
Individual facings

Multivo™ Max for individual facings

The new Multivo™ Max base clip enables attachment on both MU-RAIL and T-profile. MU-RAIL is the preferred solution due to robust fixation and is the most convenient solution for planogram changes. T-profile attachment is an option when Multivo™ Max and Optimal™ are installed on the same shelf.



Version A:
If Optimal™ T-profile
already is installed



Version B:
Use T-rail with
magnet tape



Increase communication and segmentation using our Brandline™ profiles.

Cross-selling possibilities

- Using Multivo™ universal front rail allows to install push and pull solutions for many different product types and sizes, by adding Multivo™ dividers.
- Differentiate your category from competitors
- Additional sales potential





© HL Display - TECH0519EN78 - Edition 2/2020

Flexible merchandising to increase operational efficiency



Scan to read more and watch product video!

HL DISPLAY AB
Cylindervägen 18 Box 1118
131 26 Nacka Strand
Sweden

Tel +46 8 683 73 00

www.hl-display.com
info@hl-display.com

