

Next™

Expandable pusher
system for crossbars

Technical sheet

The most versatile and customizable pusher tray on the market today



Maximise merchandising space and product visibility

Next™ is a crossbar pusher system, enabling you to create a wall of products that enhances the category and brand awareness.



Next™ - What is it and how does it work?

The Next™ system comprises of crossbars, expandable pusher trays and accessories. By removing shelves and replacing with a crossbar installation allows more products to be displayed and better flexibility.

Different packaging and product sizes can be presented next to each other even the most difficult!

Key benefits

- / Ensures attractive, automatically front-faced product display at all times
- / 24% reduction of time needed to manage the fixture
- / Improves product and price visibility

Recommended categories

Maximize stock turnover and increase sales

- / Create a wall of products and deliver differentiation
- / Improve product and price visibility which will drive sales
- / Ideal for chilled food and dry grocery products but also a very good merchandising solution for non-food too.



How you make your order in two steps!

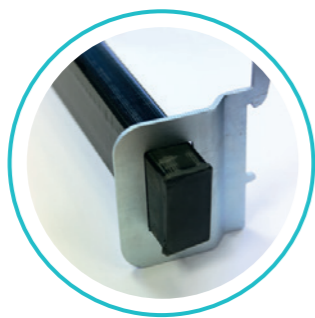
Standard or heavy duty crossbar with euro brackets, compatible for most gondolas on the market (P25, P50).



Step1. Select your crossbar!



WP-BAR-EU
(Standard)



CB-WP-XL
(Heavy duty)

Categories	Standard (WP-BAR-EU)	Heavy duty (CB-WP-XL)
Chocolate tablets	-	•
Sugar confectionary	•	•
Rice, coffee	-	•
Pizzas	-	•
Chilled food	•	-
Freezer	•	•

Crossbar	Thickness	Width (mm)
Standard	25x25	530, 610, 760, 770, 930, 1000, 1240, 1250, 1330
Heavy duty	25x50	530, 610, 760, 770, 930, 1000, 1240, 1250, 1330

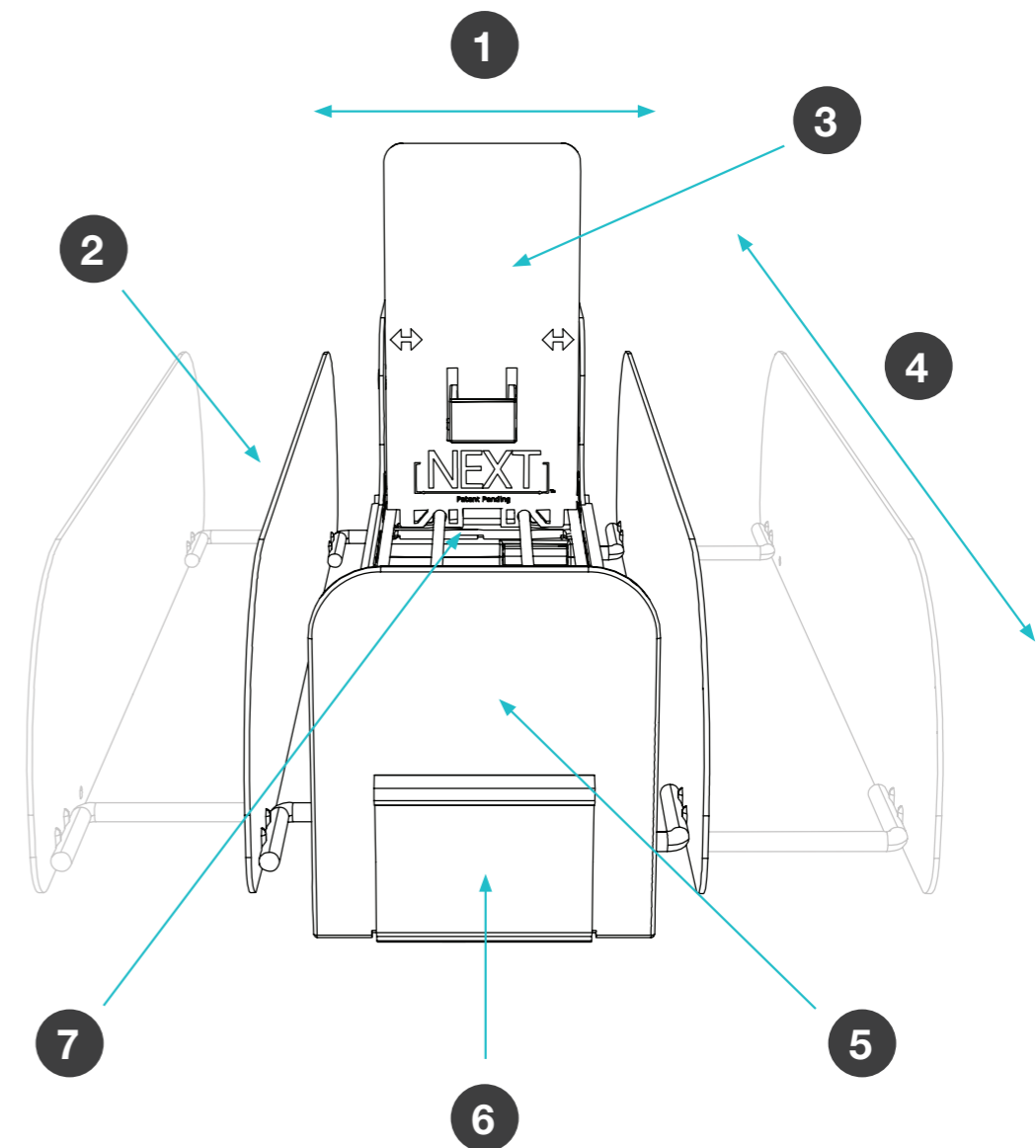
For any other sizes simply cut the crossbar to the desired length and replace the plastic end plugs to finish.

Step2. Configure the expandable pusher tray

Expandable pusher trays, mounted on cross bars that consist of the following customizable options:

- ! Make sure the pusher trays are not longer than the existing shelves before removal so temperature can be maintained in the cooler.
- ! We recommend a maximum load of 8-10kg per pusher tray.

1. Model width
2. Expandable dividers
3. Pusher house
4. Depth
5. Front fence
6. Label holder
7. Spring strength

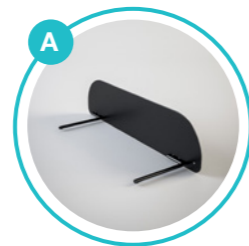
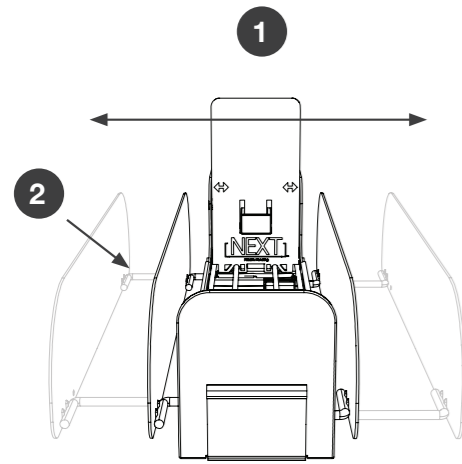


Model width and Expandable dividers

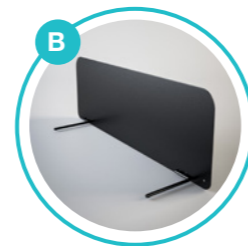
Trays are available in 2 widths:

/ WP3 = 84mm-165mm

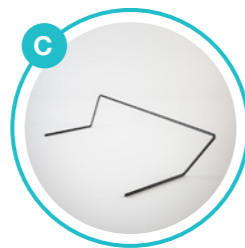
/ WP5 = 135mm-305 mm



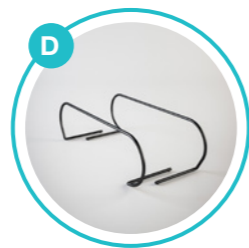
M. Standard plain metal divider



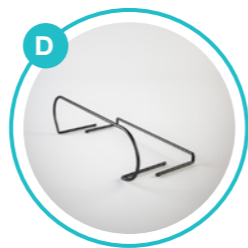
MH. High divider



P. Wire divider



2W. Wire divider (2 dividers)



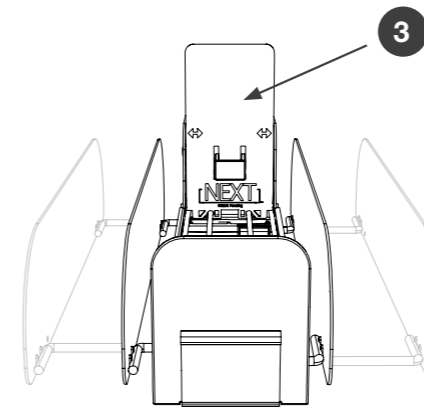
W. Wire divider (1 Divider+ 1 side)

! The pizza tray has a reinforced base to sustain tough in-store environments!

	Height (mm)	Usage
A	73	Most of products
B	145	High products
C	170	Pizzas, round products
D	73	Textile, chocolate tablets, ready or frozen meals in boxes.
E	73	Textile, chocolate tablets, ready or frozen meals in boxes.

Pusher house

Select the pusher housing that best fit the product dimensions (width and height). To obtain good functionality, the width of the product being loaded should be larger than the pusher house.



WP5 pinless pusher paddle reduces the friction when smoothly moving along the tray due to the reinforced thickness of the paddle edges



WP5 pinless pusher paddle

Next™ trays can also be ordered without the pusher paddle lock (NL)



WP3 House



WP5 house



WP5-pizza house 6,5"

	WP3		WP5		Pizza	
Width (mm)	65		116		116	
Pusher code / Height (mm)	P3,5	89	P3,5	89	X	X
	P5	89	P5	127	X	X
	P6,5	165	P6,5	165	P6,5P	165



Tray depth and front face

Trays are available in 5 depths:

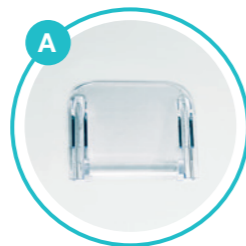
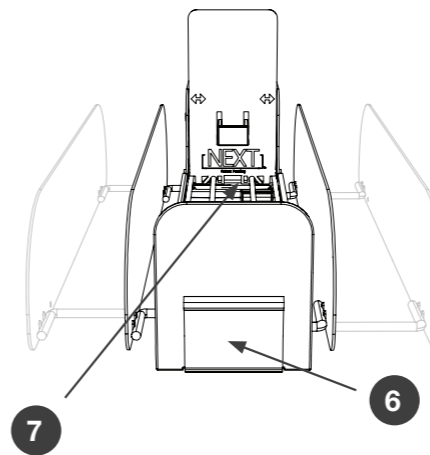
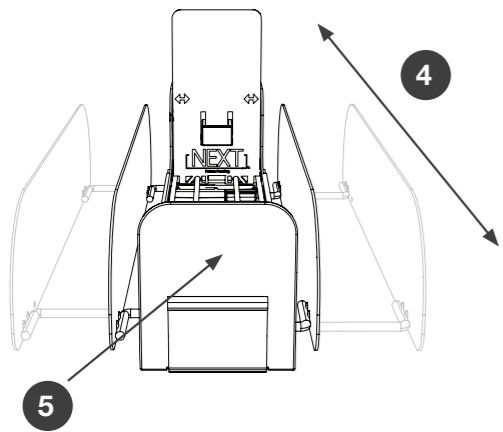
381mm, 432mm, 483mm, 533mm, 610mm

- / Next™ fronts prevent products from falling.
- / Improved product visibility.
- / Dedicated fronts for high products.
- / Integrated label holders.

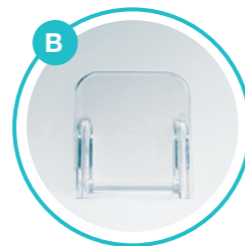


Label holder and springs

A label holder is attached on the front and can be used with either paper or ESL's. Prices and products always match, even if the planogram changes the price tickets stay in place.



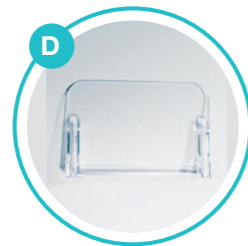
WP3 FRONT F2



WP3 FRONT F3



WP3 FRONT F6



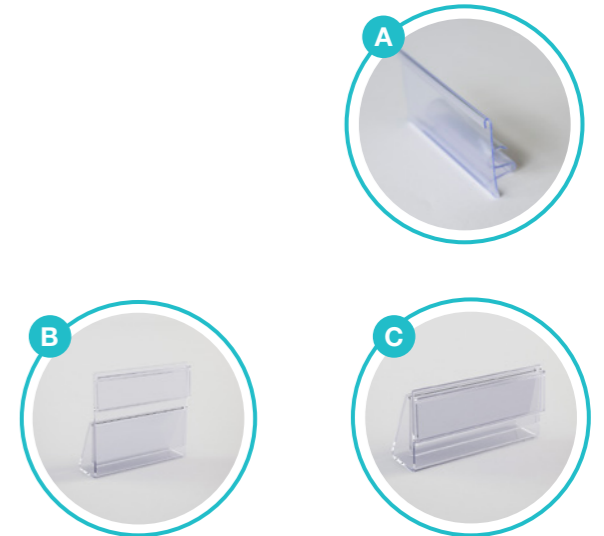
WP5 FRONT F3



WP5 FRONT F3,5



WP5 FRONT F6



A. C39 Paper label holder		B. ESL adapter (standard height)		C. E27 (H27 adapter)	
WP3	WP5	WP3	WP5	WP3	WP5
W70	W93	W50	W100	W50	W100

*This code is used in our naming convention. See page 7.

	A: F2	B: F3	C: F6	D: F3	E: F3,5	F: F6
Dimension (mm) w x h	76 x 59	76 x 85	76 x 125 / 73	127 x 85	152 x 108	152 x 152 / 73
	Most standard products		Pouches, bags, high products	Boxes	Larger boxes	Pouches, bags, high products



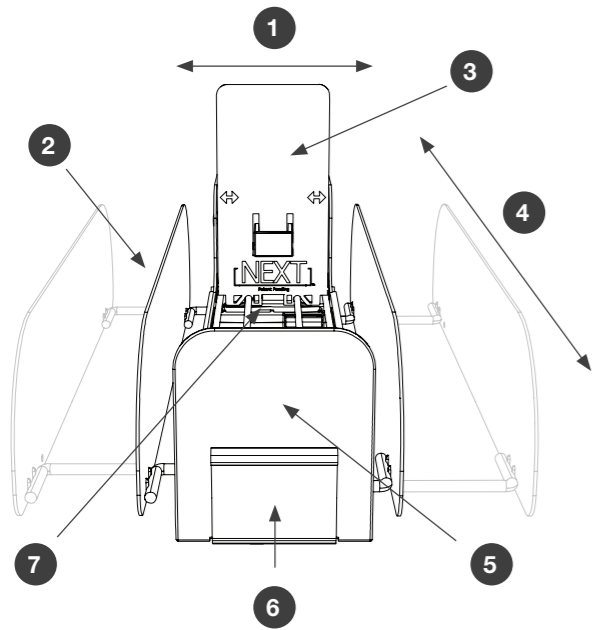
WP SPRING

Usage examples

Spring strength	Usage
4	Fresh herbs, variety of salads
6	Salads, dry soups & sauces, chips, hosiery
9 or 10	Ham, prepacked meal, fresh pasta
10	Chocolate tablets, sugar confectionery
12	Tall chocolate tablets, smoked fish, meat (chicken)
2 x 9 or 2 x 10	Pizzas, textile, frozen products, stationery



Configuration example



- 1. Model width
- 2. Expandable dividers
- 3. Pusher house
- 4. Depth
- 5. Front fence
- 6. Label holder
- 7. Spring strength



System	Model	Divider	Pusher	Depth	Fence	Label	Spring	Colour
	1	2	3	4	5	6	7	
NXT	- WP5	- M	- P5	- 0483	- F9	- C39	- 9	- coS

Open cooler airflow

Maintaining temperature in coolers

The air baffle is required when shelves are removed in open coolers, this will help the air curtain and flow to work properly and keep required temperature in the front and back of the trays.

- / It avoids sudden drops in air temperature.
- / The baffle should be mounted on the crossbar below the trays.
- / Prices and products always match, even if the planogram changes the price tickets stay in place.



AIR BUFFLE (WPAB)
Length in mm: 381, 432, 483, 533 and 610.



Lighting

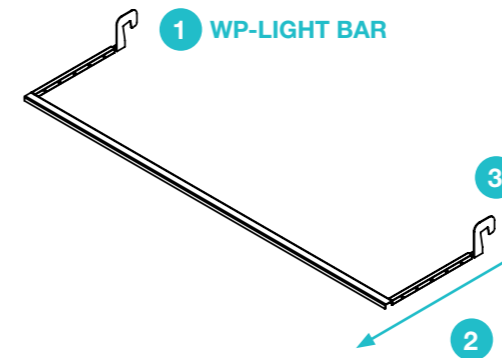
Enhance product visibility

- / Next™ trays allow down lighting using simple accessories.
- / Compatible with Ad'Lite™ LED (see separate documentation).
- / Low energy consumption, low temperature but high brightness.

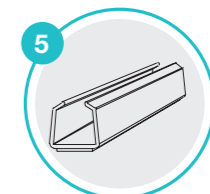
1. Lighting support
2. Telescopic side (5 positions)
3. U bracket
4. Led bar
5. Accessories to attach the led bar into the metal frame (by tape or with screws)



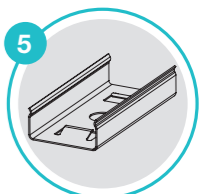
Standard length	5 positions	Tray depth
890, 1220, 1240 mm. Other sizes on request	374	381
	424	432
	475	483
	526	533
	577	610



LED



FLU

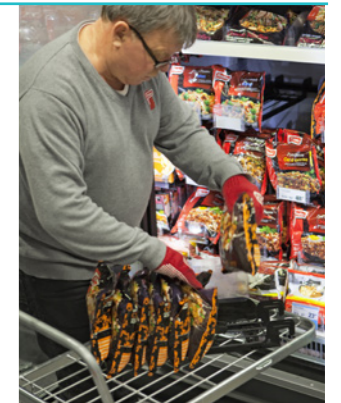


LED MONTAGE CLIP

Restocking

Lift the pusher trays off the crossbar - a new way of working

- / Remove pusher tray completely from the crossbar.
- / Lock the pusher paddle at its back position (hook it).
- / Refill with products respecting the FIFO process.
- / Push on the first products to release the lock.





© HL Display - TECH0321/ENG156 - Edition 1/2021

Maximise merchandising space and product visibility



Scan to read more and watch product video!

HL DISPLAY AB

Cylindervägen 18 Box 1118
131 26 Nacka Strand, Sweden

Tel +46 8 683 73 00

www.hl-display.com
info@hl-display.com

