

# 3eBin™ - Gravity bin assembly instructions

## COMPONENT OVERVIEW:



### Components:

1. Front	9. Bearings (2 pcs)
2. Left bin body	10. Plugs (2 pcs)
3. Right bin body	11. Sleeve
4. Label holder	12. Handle
5. Springs (2 pcs)	13. Shutter seal
6. Clip	14. Shutter
7. Shutter stop	15. Top lid
8. Flow control	

## 3eBin™ - Gravity bin assembly instructions

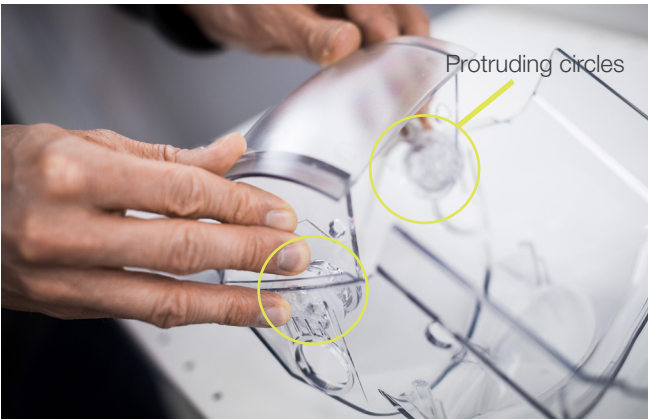
PLEASE FOLLOW THE BELOW INSTRUCTIONS FOR ASSEMBLY OF YOUR GRAVITY BIN:



1. Slide one of the eyelet openings of the **springs** onto the small shutter pegs. Do this for both springs.



2. Slide **bearings** onto the protruding circles on the shutter. Do this for both bearings.



3. Lay bin front on a flat surface. Grab **shutter**. There are four pegs on the shutter in total – the two pegs to which the springs are attached should be the ones closest to you. Insert shutter into bin front with protruding circles entering front first. Push sides of shutter slightly inwards in order to make the shutter squeeze past sides of front. Click protruding circles into the corresponding holes in the sides of front.



4. Place **spring** in groove of protruding circle. Then slide remaining eyelet opening of spring onto its spring hook. Do this for both springs.



5. Place bin front on the side. Place **handle** over the holes in the sides of front while making sure the handle is pointing in the direction of bin front top.



## 3eBin™ - Gravity bin assembly instructions



6. Push shutter in the direction opposite of the nozzle until the shutter's holes overlap with handle's holes. Click plugs into the holes in the sides of front, securing the handle to the front. Do this for both plugs. Make sure you hear one click per plug being attached – if not, keep trying by pushing the front and the shutter together using both hands as shown in the right picture above.



7. Slide **sleeve** over top the nozzle with the part of the sleeve with a ridge making contact with the nozzle first. Simultaneously, make sure streak is placed on backside of nozzle.



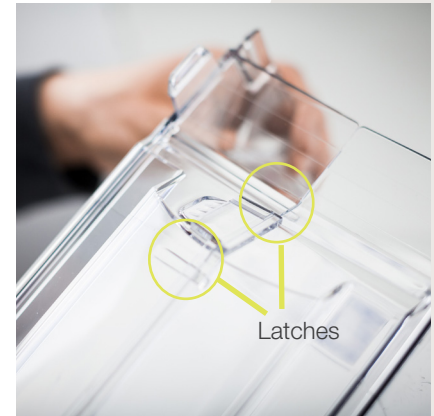
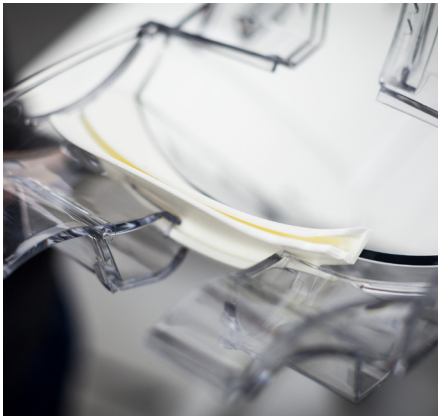
8. Attach label holder onto front by using slits on each respective side of the bin. Ensure you hear one click per side as label holder clicks into slit of each respective side of the bin.

9. Slide shutter seal onto any of the two bin body halves.

## 3eBin™ - Gravity bin assembly instructions



**10.** On a flat surface, position the two halves of the body as above. Fit the protruding pods at the back of the left bin body into the corresponding, square openings you can see at the back of the right bin body. Then move the rest of the left and right bin body towards each other.



**11.** Ensure shutter seal is inserted into the other bin body half as well.

**12.** When eventually connecting both body halves, make sure latches click into each other. There are 8 latches in total - 2 large ones, 6 small ones.



**13.** With bin in the same position, click shutter stop into place in its hinges. Make sure shutter stop is installed in a way that places the encircled plastic grip on inside of the bin.

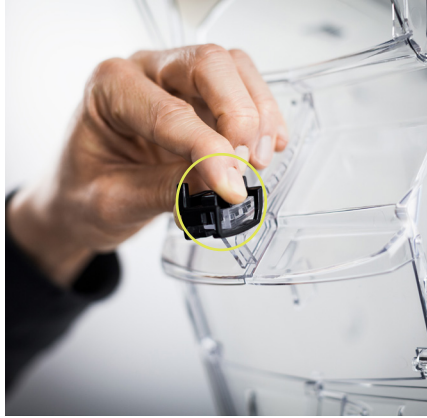
**14.** If you do not wish to activate the false front functionality, do not carry out this step. To activate false front functionality, stick your hand past shutter seal and into bin to attach the shutter stop.



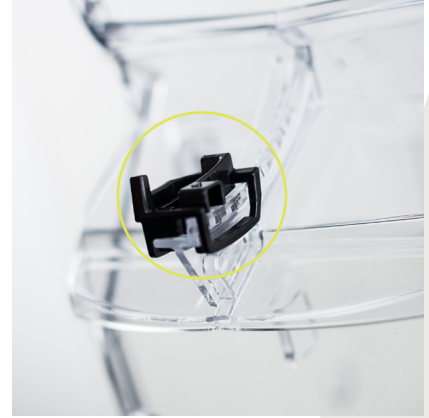
## 3eBin™ - Gravity bin assembly instructions



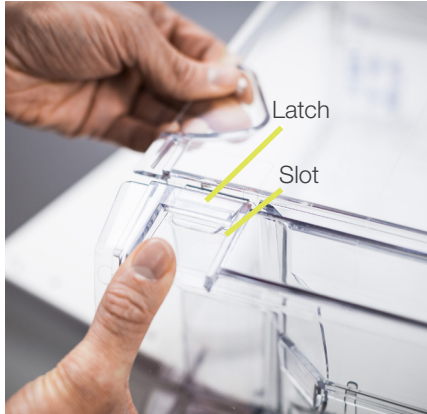
**15.** Attach the **clip** to underside of bin by inserting clip from right to left.



**16.** Slide **flow control** onto ridge running below shutter stop. To do this, press part encircled above toward center of bin. In the right picture above, flow control is set to the largest flow possible.



**17.** Lay bin body down. Attach bin front to bin body by laying back part of front's nozzle part over top bin body's nozzle part.



**18.** Plug latches at top of front into bin body slots.



**19.** Turn bin around and attach top lid to bin. Your bin is now fully assembled.